



浙江师范大学
ZHEJIANG NORMAL UNIVERSITY

Zhejiang Normal University

A Committed International Partner





4 Campuses of ZJNU, covering a total area of **300** hectares



Main Campus situated in Jinhua, Zhejiang

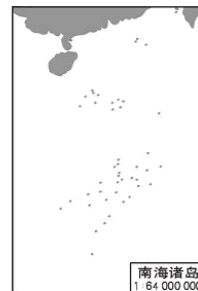
中国地图



170 km from Hangzhou
(50 min by High-Speed Rail)

320 km from Shanghai
(1.5 hrs by High-Speed Rail)

Yangtze Delta
(largest economic zone in China)



1 : 32 000 000

审图号: GS(2016)1571号
自然资源部 监制



Global Rankings



#360

U.S. News Best Global Universities 2025



#401-500

ARWU World University Rankings 2023



#501-600

THE World University Rankings 2023



National Rankings



Provincial Key University

1

Top 1 on African Studies

10

Top 10 Normal Universities
in China

5

Top 5 on Children's studies

88

Ranked 88th, among 2000+
Universities in China

10

Top 10 on Education Studies

57

Top 57 on Chemistry

40

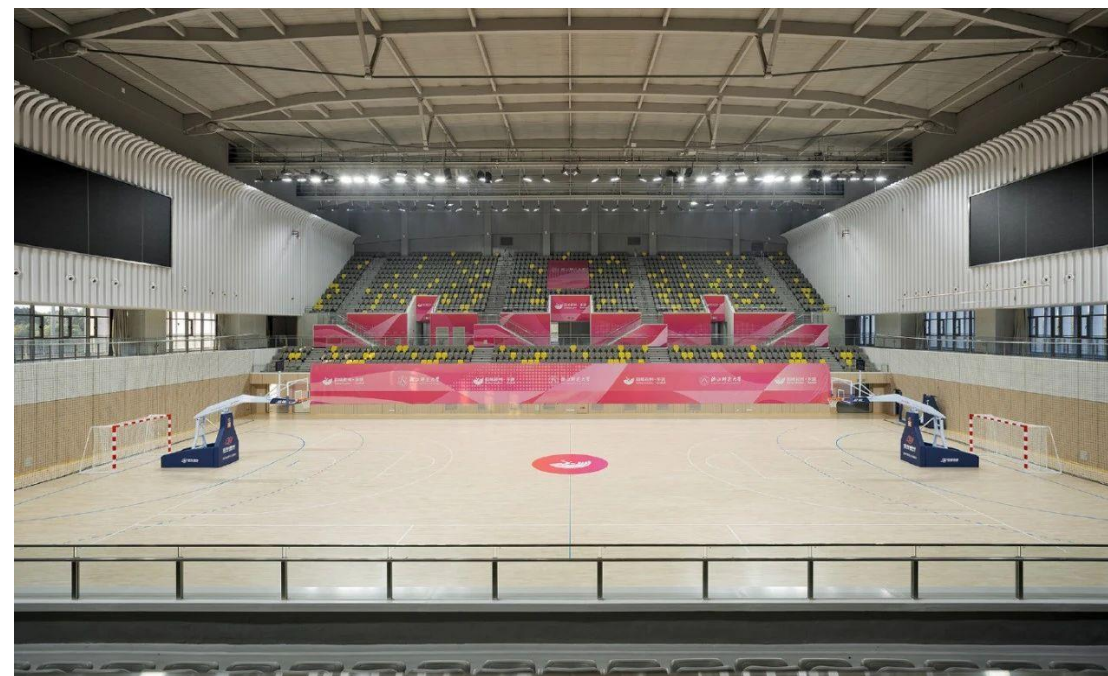
Top 40 on Mathematics



- **26** colleges
- **29,000+** undergraduates
- **10,000+** postgraduate students
- **3,000+** international students
- **3,000+** faculty and staff
- **430+** full professors
- **760+** associate professors

Facility and Equipment

- **3** Libraries
- **3.7** Million Books
- **100** Student Associations
- **2** Asian Games Venues: Football & Handball
- **33+** Hectares of Green Space
- **910+** Million RMB Experimental Equipments



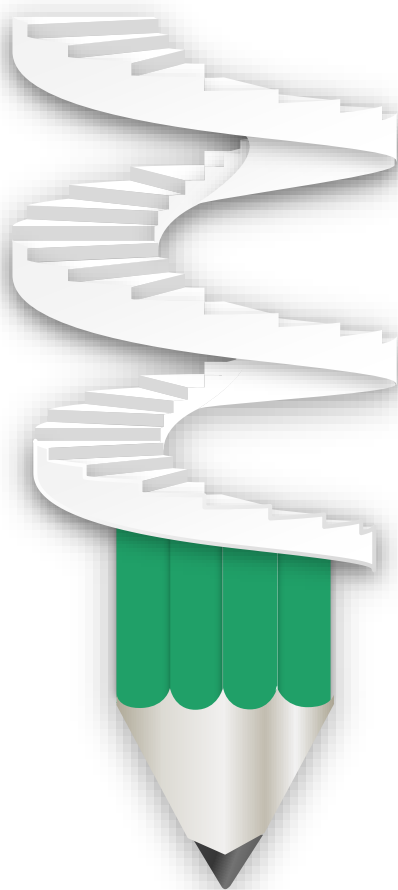


Academics

- **69** undergraduate programs
- **110** master's programs
- **74** doctoral programs
- **11** post-doctoral research stations

Key Subjects

- **Political Science**
- **Theory of Marxism**
- **Psychology**
- **Education**
- **Chinese Language & Literature**
- **Chinese History**
- **Mathematics**
- **Physics**
- **Chemistry**
- **Biology**



- **Software Engineering**
- **Applied economics**
- **Sociology**
- **Physical Education**
- **Foreign Language & Literature**
- **Geography**
- **Music and Dance**
- **Fine Arts**
- **Ecology**
- **Cyberspace Security**



Essential Science Indicators (ESI) Top 1% Subjects

- Chemistry
- Materials Science
- Mathematics
- Computer Science
- Engineering
- Environment/Ecology
- Plant & Animal Science
- Social Sciences, general
- Psychiatry/Psychology
- Physics

Three Features

- Mathematics
- Education Studies
- African Studies

International Engagement

ZJNU has established partnerships with **280+** educational and research institutions in **80+** countries.



Research Strength



30⁺ Research Institutes & Centers with international partners

- National Base of Graph and Network Optimization
- National Base of Advanced Fluorine-Containing Materials
- China-Mozambique “Belt and Road” Joint Laboratory on Smart Agriculture



Faculty Internationalization

- **400⁺** teachers go abroad for academic exchanges and research collaboration every year
- **130⁺** international academics and researchers work at ZJNU





Study at ZJNU

- **3,000⁺** international students from **100⁺** countries study at ZJNU.
- **Faustin-Archange Touadéra**, the sitting president of the Central African Republic, took part in a training program at ZJNU in 2005.



Study Abroad

- **800+** ZJNU students study abroad or participate in exchange programs each year
- **10** million RMB annual fund in student exchanges

International Chinese Language Education



4 Confucius Institutes

- ▶ Cameroon
- ▶ Mozambique
- ▶ Tanzania
- ▶ South Africa



We are committed to further engaging in international collaboration by expanding quality opportunities in more cooperation areas.

- Student & Faculty Exchange Programs
- Research Partnerships
- Joint Program(s) & Institute(s)

Contact with us



@StudyAtZJNU

Web: <http://www.zjnu.edu.cn>

Add: 688 Yinbin Avenue, Jinhua City

Tel: +86-579-8228-3889, 8228-3892

Fax: +86-579-8228-0337

E-mail: international@zjnu.edu.cn

